



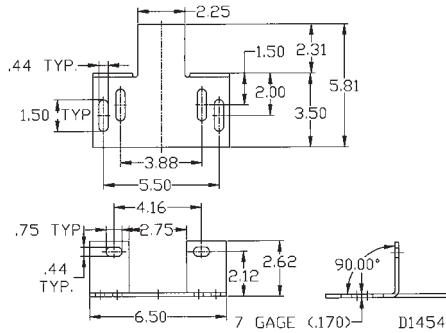
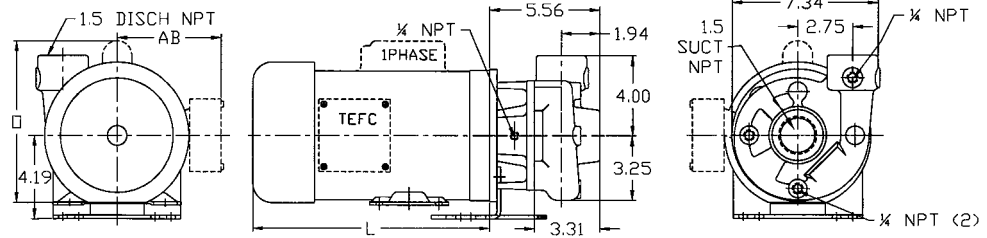
MOTORPUMP™ — 3500 RPM

60 HERTZ, 1.5 X 1.5 X 4.38 NPT

51
J56

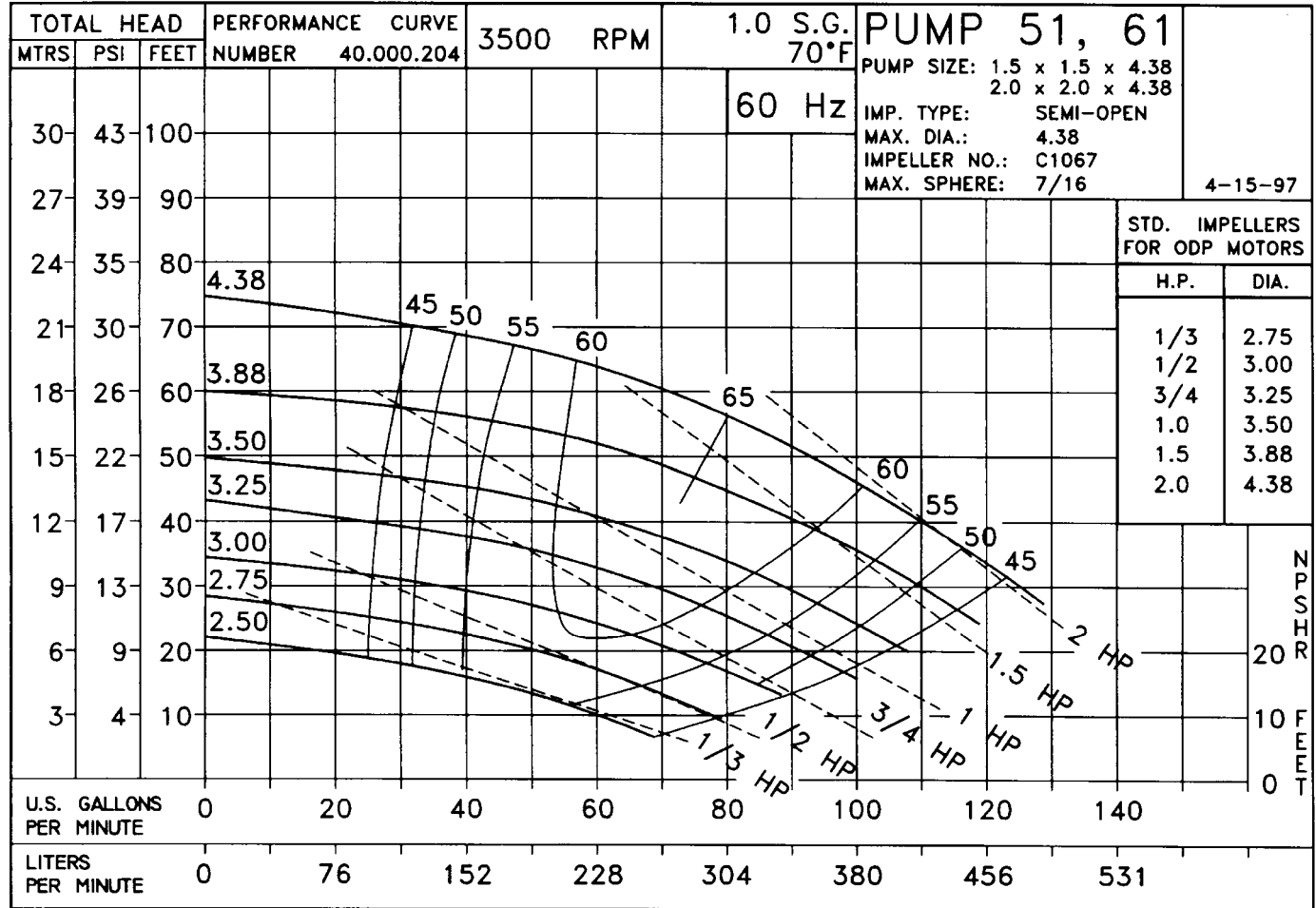
MOTOR DIMENSIONS NEMA J56 FRAME 3500 RPM

HP	FRAME	ODP						TEFC					
		3PH			1PH			3PH			1PH		
		L	O	AB	L	O	AB	L	O	AB	L	O	AB
.33	J56	7.87	6.50	3.25	9.33	8.75	3.25	9.43	7.04	5.31	12.00	8.10	5.31
.50	J56	8.37	6.50	3.25	10.52	8.75	3.25	9.43	7.04	5.31	12.00	8.10	5.31
.75	J56	8.37	6.50	3.25	10.83	8.75	3.25	9.43	7.04	5.31	12.00	8.10	5.31
1.0	J56	8.37	6.50	3.25	11.02	8.75	3.25	9.43	7.04	5.31	13.18	8.10	5.31
1.5	J56	8.87	6.50	3.25	11.33	8.75	3.25	9.43	7.04	5.31	13.18	8.10	5.31
2.0	J56	8.87	6.50	3.25	10.69	8.75	3.25	9.43	7.04	5.31	14.36	8.10	5.31



ALL DIMENSIONS IN INCHES.

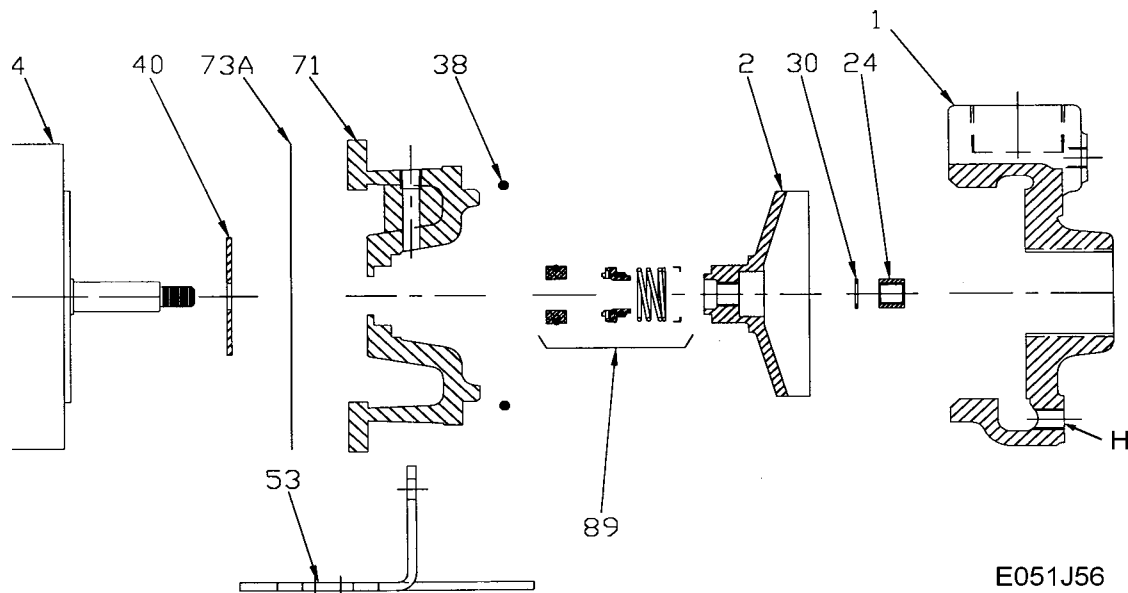
DRAWING REPRESENTS APPROXIMATE PUMP DIMENSIONS. AUTOCAD DRAWING TO SCALE AVAILABLE FROM FACTORY.



D1454
05107DP
51
J56

D051J56
0613500
051J3500
81.001.124 D3

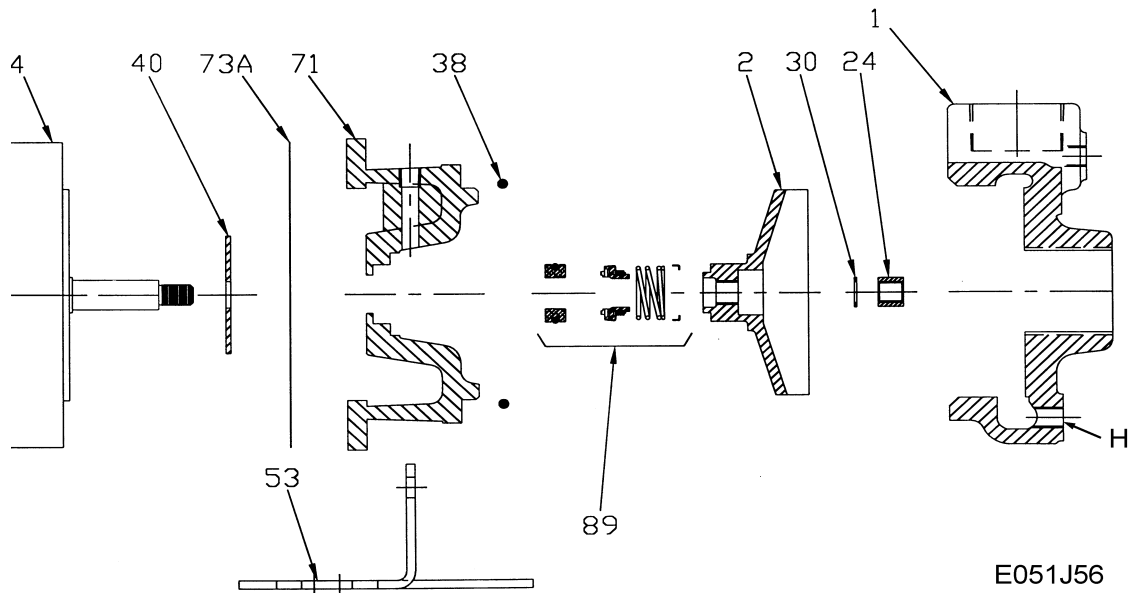
Pump 51 • Iron • J56 Frame • 3500 RPM



E051J56

KEY NO.	PART NAME	PUMP 51		
1	CASE, IRON, 1.5 x 1.5 NPT	130.000.177X		
2	IMPELLER, 7/16" THREADED, SEMI-OPEN, SPECIFY DIAMETER:			
	IRON	137.000.118		
	BRONZE	137.000.119		
4	MOTOR:			
	J56, ROUND BODY J56, 3.5" RIGID BASE	See Chart See Chart		
24*+	NUT, STAINLESS	105.000.465		
30*+	D WASHER, STAINLESS	104.000.168		
40*	FLINGER, NEOPRENE	104.000.171		
53	BASE, STEEL	119.000.231A		
71	ADAPTER, IRON	132.000.207		
73*	GASKET, CASE, BUNA	116.000.141		
89*	5/8" SEALS:			
	NO RETAINER: (not shown)			
	TYPE 6, BN-CARB/CM	101.000.110		
	WITH RETAINER:			
	TYPE 21, VN-CARB/CM	101.000.103		
	TYPE 21, VN-CARB/SIL	101.000.120		
	TYPE 21, VN-SIL/SIL	101.000.239		
TYPE 21, EPDM-CARB/CM	101.000.327			
TYPE 21, EPDM-CARB/SIL	101.000.173			
TYPE 21, EPDM-SIL/SIL	101.000.236			
--	REPAIR KITS:			
	BN-CARB/CM SEAL		3 PHASE:	† 1 PHASE:
	VN-CARB/CM SEAL		118.000.341	118.000.341.1
	VN-CARB/SIL SEAL		118.000.341A	118.000.341A.1
	VN-SIL/SIL SEAL		118.000.341B	118.000.341B.1
	EPDM-CARB/CM SEAL		118.000.341F	118.000.341F.1
	EPDM-CARB/SIL SEAL		118.000.341G	118.000.341G.1
EPDM-SIL/SIL SEAL		118.000.341C	118.000.341C.1	
EPDM-SIL/SIL SEAL		118.000.341D	118.000.341D.1	
<p>* DENOTES COMPONENTS INCLUDED IN REPAIR KIT. + NOT REQUIRED ON 1/3 TO 1-1/2 HP 1 PHASE MOTORS. † USE 3 PHASE KIT ON 2-3 HP 1 PHASE MOTORS.</p>				

Pump 51 • Iron • J56 Frame • 3500 RPM



E051J56

CONSTRUCTION OPTIONS				
KEY	PART NAME	STANDARD FITTED	BRONZE FITTED	ALL IRON
1	Case	Iron	Iron	Iron
2	Impeller	Iron	Bronze	Iron
24	Impeller Locknut	Stainless	Stainless	Stainless
30	D-Washer	Stainless	Stainless	Stainless
40	Flinger	Neoprene	Neoprene	Neoprene
53	Base	Steel	Steel	Steel
71	Adapter	Iron	Iron	Iron
73	Gasket, Case	Buna	Buna	Buna
89	Mechanical Seal, Type 6 BN-CM	Standard	Standard	Standard
H	Plug, Drain	Brass	Brass	Plated